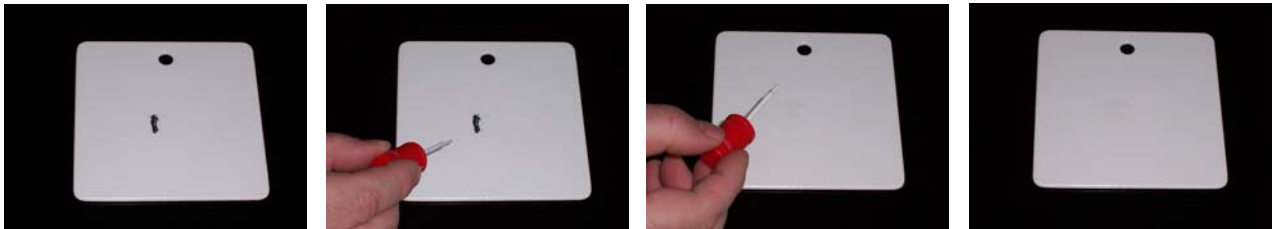


**Repair Instructions****Epoxy (EP):**

Repair the Epoxy (EP) surfaces with the retouching brush only.

This is only a protection against corrosion!

**Polyethylene (PE) – Thermofix KPE 03:**

Repair the Polyethylene (PE) – Thermofix KPE 03 surfaces with the Polyethylene powder only.



We recommend the following procedure:

1. The damaged area must be clean. Remove all soiled areas with a wire-brush.
2. Warm the area to be repaired with a soft flame until the surrounding coating melts.
3. Apply powder
4. Melt the powder with a soft flame and allow it to run. At around 280°C/ 536°F the coating will stay.
5. Repeat position 4 until you have an even coating.
6. Heat the surface until it is smooth and free of bubbles.
7. Allow to cool.